

Macclesfield District General Hospital Emergency Department Monthly Bulletin: April 2008 to March 2009

This bulletin provides a breakdown of all injury attendances at Macclesfield District General Hospital Emergency Department (ED) between April 2008 and March 2009.

Between April 2008 and March 2009 there were 26,443 ED attendances. Injury attendances peaked in May (n=2,482), with December (n=1,881) having the least number of injury attendances (**Figure 1**).

For all months there were more male injury attendances than female presenting at Macclesfield District General Hospital ED (54%).

Figure 2 presents the age group of injury attendances. Across the whole year the majority of injury attendances were made by individuals aged 30-59 years.

Table 1 details the injury group of injury attendances. The majority of injury attendances were classified as 'other injury' (86%), 7% were

recorded as sports injuries and 3% road traffic collisions (RTCs).

Table 2 illustrates the source of referral for patients presenting with injuries. The majority (63%) of injury attendees self-referred.

Table 3 presents injury attendances by location of incident. One in four (41%) of all injury locations were recorded as other and 26% recorded as public place.

Table 4 shows the discharge destination of injury attendances. Over half (58%) of attendees were discharged.

Assault attendees presenting at Macclesfield District General Hospital ED between April 2008 and March 2009 were mainly male (74%) and the majority (44%) were aged between 18 and 29 years of age.

Table 5 shows the primary location of assault was recorded as other (55%).

Figure 1: Gender of injury attendances by month, April 2008 to March 2009

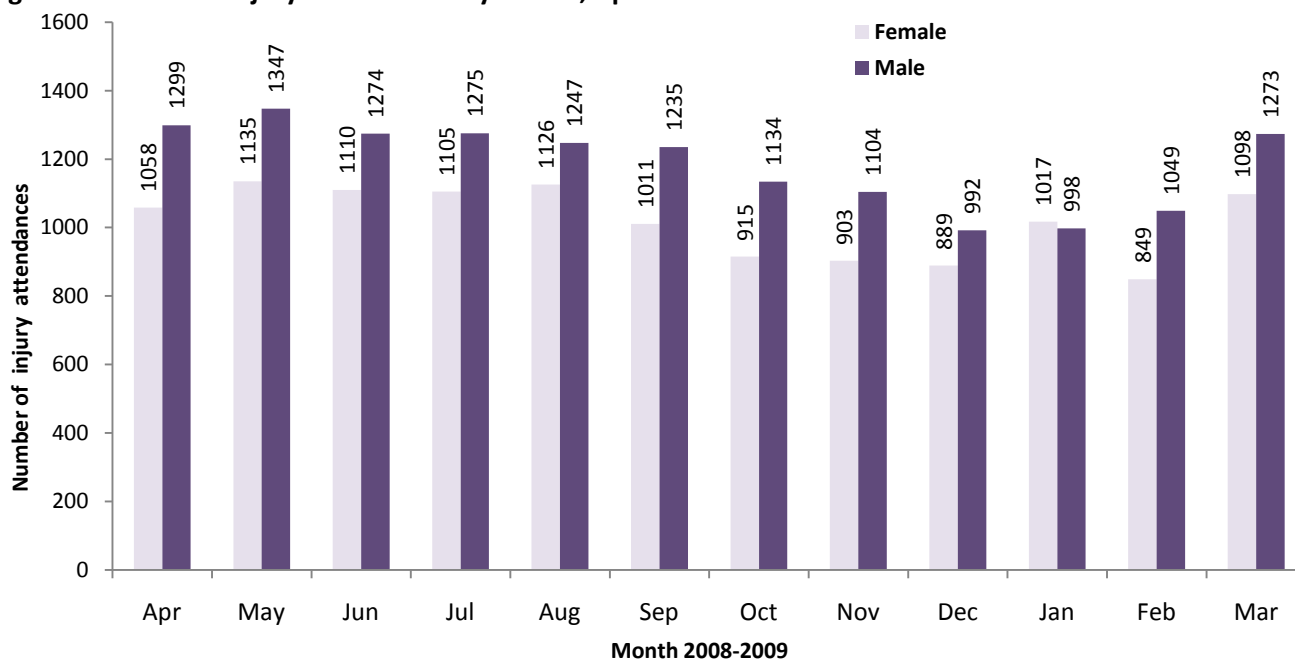


Figure 2: Age group of injury attendances by month, April 2008 to March 2009

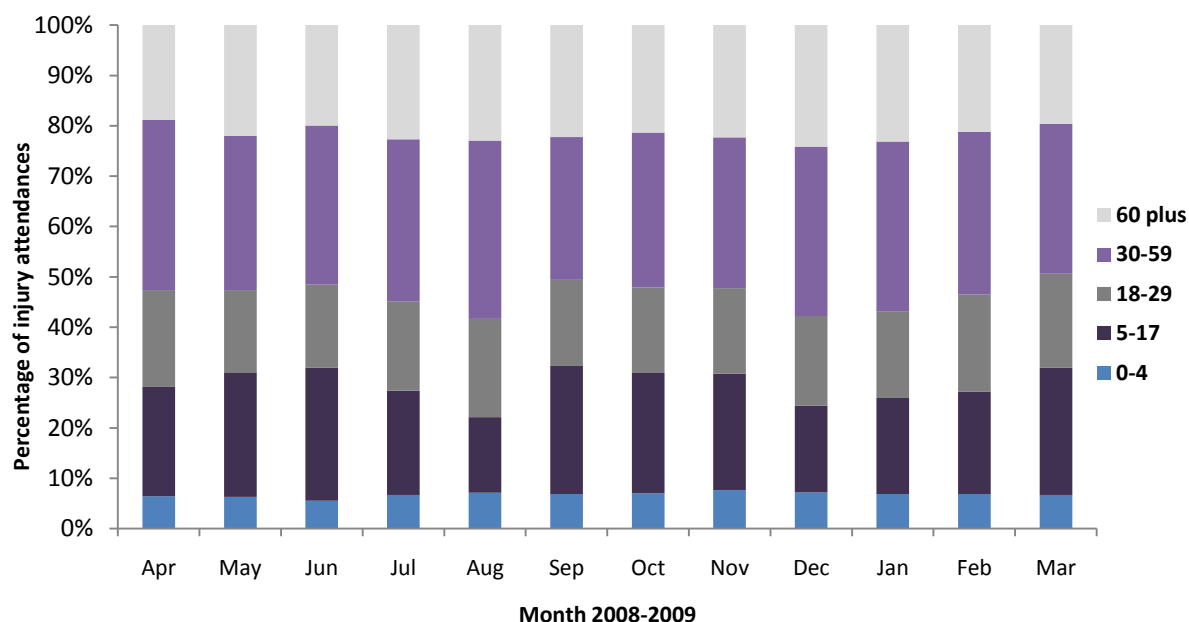


Table 1: Injury attendances by injury group, April 2008 to March 2009

Injury group	Apr	May	Jun	Jul	Aug	Sep	Oct	Nov	Dec	Jan	Feb	Mar	Total	%
Other injury	2038	2199	2033	2047	2083	1955	1720	1692	1646	1697	1625	1940	22675	86
Sports injury	144	128	168	159	95	148	179	146	68	129	124	249	1737	7
RTC	52	48	73	53	70	58	56	65	62	70	48	63	718	3
Assault	53	46	52	58	41	38	43	49	57	48	58	58	601	2
Deliberate self-harm	59	49	42	41	48	42	38	35	35	61	32	53	535	2
Firework injury	11	12	16	22	36	5	13	20	13	10	11	8	177	1
Total	2357	2482	2384	2380	2373	2246	2049	2007	1881	2015	1898	2371	26443	100

Table 2: Injury attendances by source of referral, April 2008 to March 2009¹

Source of referral	Apr	May	Jun	Jul	Aug	Sep	Oct	Nov	Dec	Jan	Feb	Mar	Total	%
Self referral	1516	1534	1570	1444	1506	1426	1326	1263	1218	1239	1206	1519	16767	63
Other	447	581	445	586	551	518	430	441	403	518	436	563	5919	22
Health care provider	289	263	253	226	207	200	195	203	173	135	170	198	2512	9
General medical practitioner	80	78	69	90	93	83	74	71	60	85	59	62	904	3
Police	14	13	24	19	13	7	8	13	13	16	11	7	158	1
Educational establishment	7	8	10	8	***	10	14	13	***	15	6	10	107	0
Work	***	***	10	6	***	***	***	***	7	6	9	12	65	0
Local authority social services	***	***	***	***	***	***	***	***	***	***	***	***	9	0
General dental practitioner	***	***	***	***	***	***	***	***	***	***	***	***	***	0
Unknown	***	***	***	***	***	***	***	***	***	***	***	***	***	0
Total	2357	2482	2384	2380	2373	2246	2049	2007	1881	2015	1898	2371	26443	100

Table 3: Injury attendances by location of incident, April 2008 to March 2009

Incident location	Apr	May	Jun	Jul	Aug	Sep	Oct	Nov	Dec	Jan	Feb	Mar	Total	%
Other	935	941	884	990	1095	998	797	798	840	811	745	940	10774	41
Public place	631	658	646	625	591	528	536	493	437	520	506	606	6777	26
Home	495	584	533	519	517	421	410	446	386	427	430	471	5639	21
Work	182	177	184	169	<170	166	192	137	<140	136	134	183	1968	7
Educational establishment	114	122	137	77	***	133	114	133	<80	121	83	171	1285	5
Total	2357	2482	2384	2380	2373	2246	2049	2007	1881	2015	1898	2371	26443	100

¹ *** Please note that all numbers less than five have been suppressed in line with patient confidentiality and if there is only one number in a category then two numbers will be suppressed at the next level (e.g. <6) in order to prevent back calculations from totals.

Table 4: Injury attendances by discharge destination, April 2008 to March 2009

Discharge	Apr	May	Jun	Jul	Aug	Sep	Oct	Nov	Dec	Jan	Feb	Mar	Total	%
Discharged - did not require any follow up treatment	843	1013	959	864	939	917	832	840	739	757	782	936	10421	39
Discharged - follow up treatment by GP	514	442	445	468	394	358	367	329	388	432	343	449	4929	19
Admitted to a hospital bed	234	281	238	318	299	265	242	239	200	253	243	292	3104	12
Referred to ED clinic	193	218	313	292	235	234	255	234	200	182	206	260	2822	11
Referred to fracture clinic	200	217	213	226	237	229	175	170	170	214	167	211	2429	9
Referred to other out-patient clinic	277	212	100	110	146	119	102	102	93	95	85	109	1550	6
Other	49	35	54	45	44	48	38	43	34	33	31	59	513	0
Referred to other HCP	20	24	32	32	46	32	22	26	20	22	15	25	316	1
Left before being treated	18	27	20	14	21	21	9	16	28	17	14	21	226	1
Left having refused treatment	6	9	8	6	5	15	***	***	***	7	***	5	73	0
Transferred to other HCP	***	***	***	***	***	***	***	7	6	***	7	***	54	0
Died in department	***	***	***	***	***	***	***	***	***	***	***	***	6	0
Total	2357	2482	2384	2380	2373	2246	2049	2007	1881	2015	1898	2371	26443	100

GP-General Practitioner, HCP – Health Care Provider

Table 5: Location of assault for assault attendances, April 2008 to March 2009

Incident location	Apr	May	Jun	Jul	Aug	Sep	Oct	Nov	Dec	Jan	Feb	Mar	Total	%
Other	27	32	25	37	19	23	18	26	39	26	34	24	330	55
Public place	19	9	14	16	14	12	17	15	14	17	15	24	186	31
Home	***	***	8	***	5	***	***	***	***	***	***	***	33	5
Work	***	***	***	***	***	***	***	5	***	***	***	***	32	5
Educational establishment	***	***	***	***	***	***	***	***	***	***	5	***	20	3
Total	53	46	52	58	41	38	43	49	57	48	58	58	601	100

Published May 2011

Jennifer Brizell (Merseyside and Cheshire TIIG officer)

Centre for Public Health, Faculty of Health and Applied Social Sciences, Liverpool John Moores University

2nd Floor, Henry Cotton Campus, 15-21 Webster Street, Liverpool, L3 2ET

Tel: 0151 231 4500 Email: j.s.brizell@ljmu.ac.uk

Website: www.tiig.info (please note all data requests should be made through the TIIG website)